

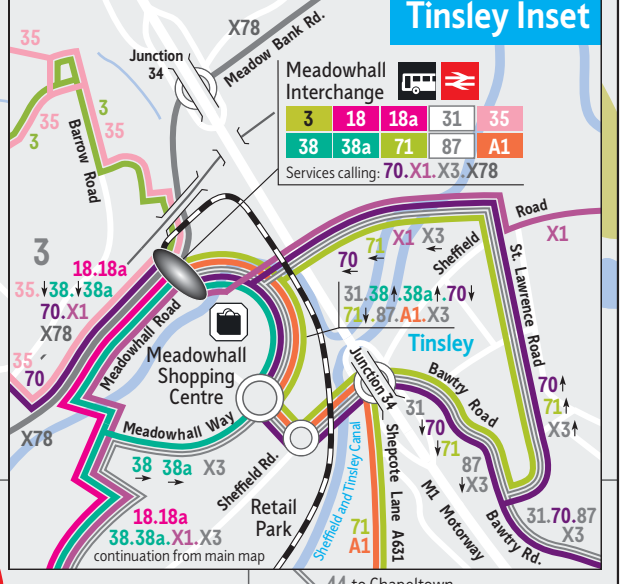
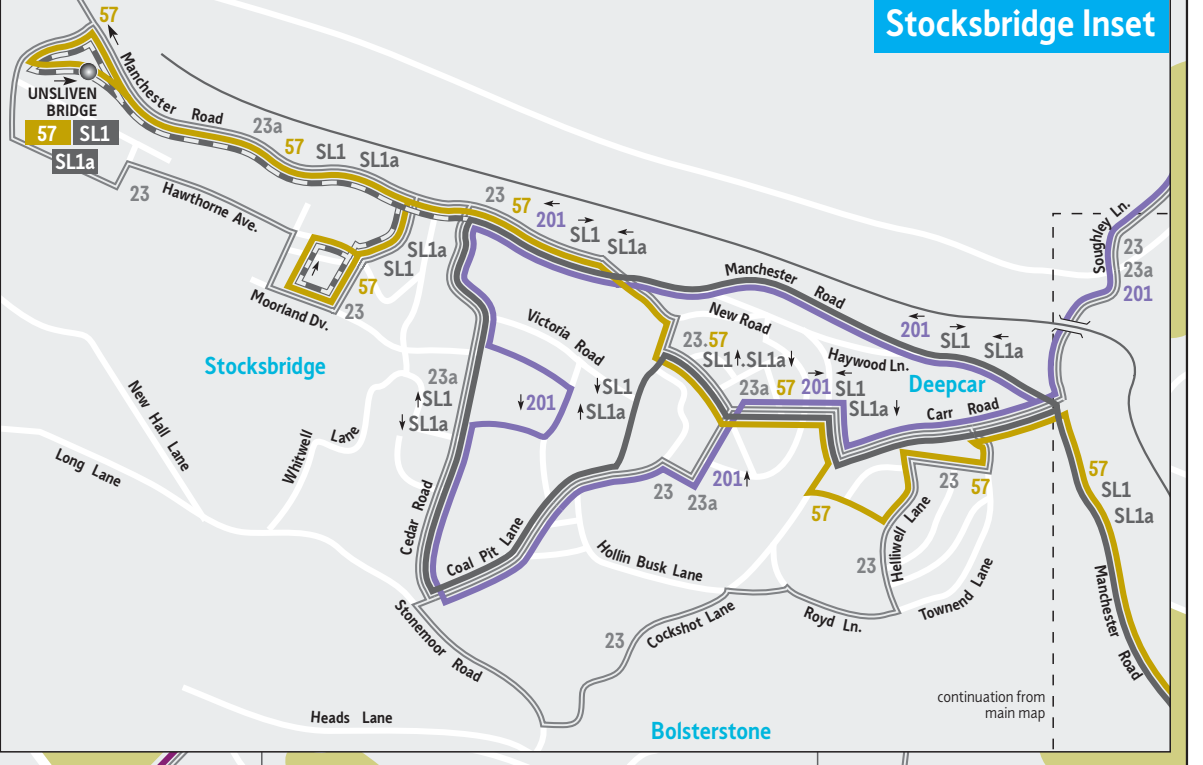
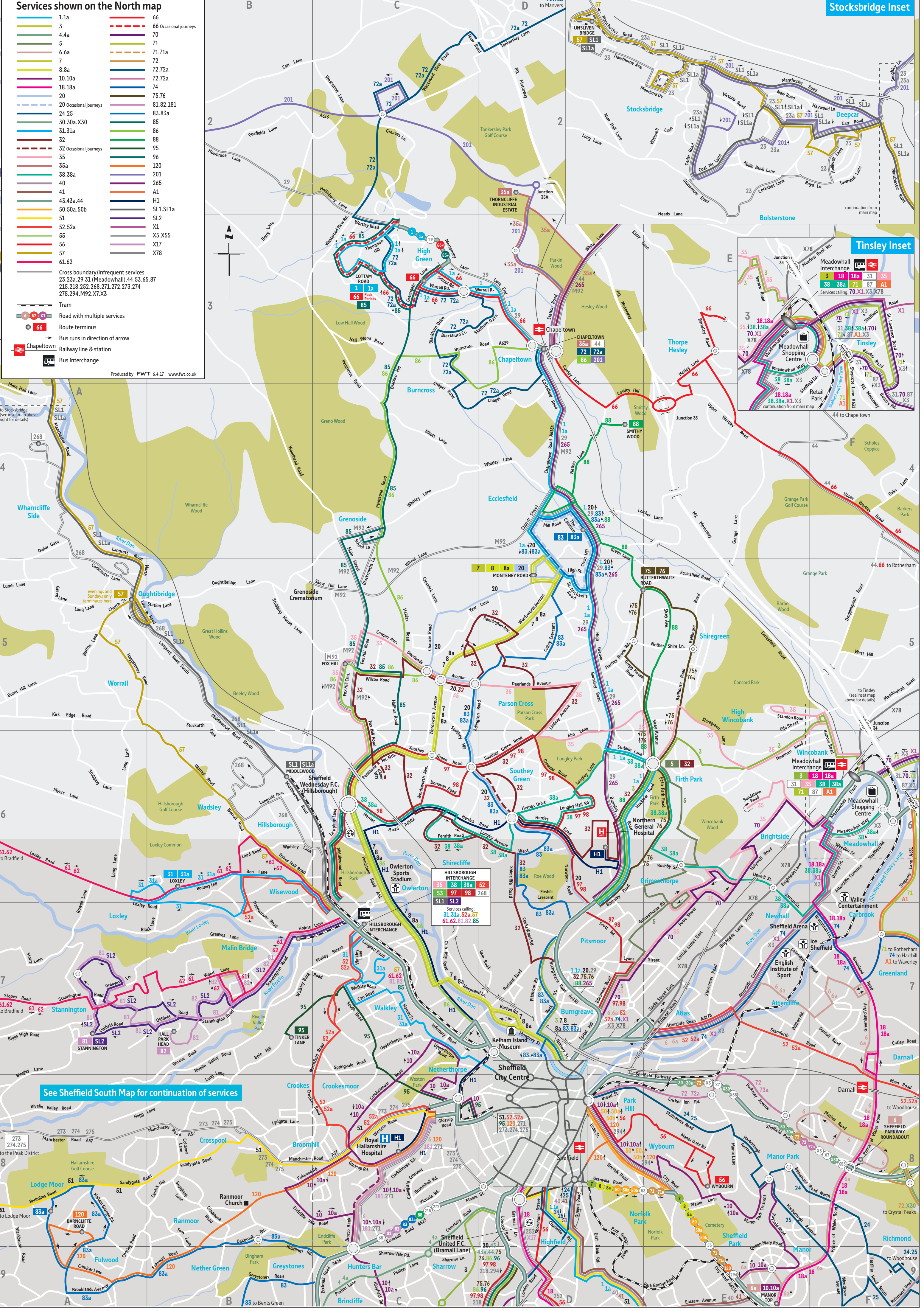
### Services shown on the North map

1.1a	66
3	66 Occasional journeys
4.4a	70
5	71
6.6a	71.71a
7	72
8.8a	72.72a
10.10a	72.72a
18.18a	74
20	75.76
20 Occasional journeys	81.82.181
24.25	83.83a
30.30a.X30	85
31.31a	86
32	88
32 Occasional journeys	95
35	96
35a	120
38.38a	201
40	265
41	A1
43.43a.44	H1
50.50a.50b	SL1.SL1a
51	SL2
52.52a	X1
55	X5.X55
56	X17
57	X78
61.62	

Cross boundary/Infrequent services  
 23.23a.29.31 (Meadowhall).44.53.65.87  
 215.218.252.268.271.272.273.274  
 275.294.M92.X7.X3

Tram  
 6 92 X1  
 Road with multiple services  
 66  
 Route terminus  
 Bus runs in direction of arrow  
 Chapeltown  
 Railway line & station  
 Bus Interchange

Produced by FWT 6.4.17 www.fwt.co.uk



### SHIRECLIFFE INTERCHANGE

35	38	38a	52
53	97	98	268
SL1	SL2		

Services calling:  
 31.31a.52a.57  
 61.62.81.82.85

See Sheffield South Map for continuation of services