

days of discovery,
years of memories

We're delighted to be partnering with our friends at Best Days Out Cornwall.

Their website - as well as a handy printed guide - is jam-packed with information, offers and competitions, many accessible on our Adventures by Bus routes.

Cornwall Association of Tourist Attractions



scan here to find out more



are you up for another Adventure by bus?

Falmouth COASTER

LAND'S END COASTER

TIN COASTER

Pick up a leaflet or go to our website for more information

adventuresbybus.co.uk

Newquay

The surfing capital of Cornwall has a decidedly boho vibe, and it's fun to watch the surfers ride the waves as they come rolling in off the Atlantic. During surfing festivals, Fistral Beach becomes the centre of the world for many, but family-friendly Newquay has plenty of other attractions to occupy everyone.

Discover Newquay's evolution from fishing port to surf mecca on the town trail, take a boat ride out to sea, browse the eclectic range of shops or get up close to a vast array of marine life at Blue Reef Aquarium.

bluereefaquarium.co.uk/
newquay 01637 878134



unlimited travel tickets

Go where you want, when you want, on any bus across the county, no matter what colour it is, or who's driving - it's one big joined up network.

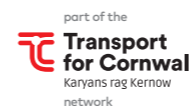


scan for up-to-date fares



English National Concessionary Travel passes accepted

for all our ticket options cornwallbykernow.co.uk or get the **First Bus app**



Padstow

Enjoy the harbour life, where fishing and pleasure craft rock side-by-side on their moorings, children fish for crabs and quayside inns, cafés, shops and galleries overlook the calm water. It's so easy to waste a day here!

It's also a foodie destination, so try some of Rick Stein's fish and chips, eat in his restaurant or visit Paul Ainesworth at No.6 for some truly delicious food.



Treat yourself to a fishing trip out in the bay, or visit the National Lobster Hatchery to discover the fascinating world of lobsters and their environment.

With views towards Bodmin Moor, Prideaux Place on the edge of Padstow is an enchanting Elizabethan manor house with exquisite gardens open Sundays to Thursdays from 10.30 to 5pm.

prideauxplace.co.uk 01841 532 411

28 May - 2 September

Newquay bus station	0935	1635	1735	1835
Great Western Hotel	0939	1639	1739	1839
Porth Four Turns	0943	1643	1743	1843
Porth Beach car park	0946	1646	1746	1846
Watergate Bay The Phoenix	0951	1651	1751	1851
Tregurrian post box	0954	1654	1754	1854
Travarran Travellers Rest	0957	1657	1757	1857
Mawgan Porth Betty's Shop	1001	1701	1801	1901
Trenance phone box	1004	1704		
Carnewas for Bedruthan Steps	1006	1706		
Treburrick Old MacDonalds Farm	1012	1712		
Porthcothan Bay	1015	1715		
St Merryn opp FryerTucks	1024	1724		
Harlyn Bridge	1029	1729		
Windmill Trevone Bay turn	1032	1732		
Padstow park&ride	1035	1735		
Padstow Tesco	1036	1736		
Padstow old rail station	1041	1741		

then hourly until

Padstow old rail station	1100	1800
Padstow Tesco	1104	1804
Padstow park&ride	1105	1805
Windmill Trevone Bay turn	1108	1808
Harlyn Bridge	1111	1811
St Merryn Fryer Tucks	1115	1815
Porthcothan Bay	1124	1824
Treburrick Old MacDonalds Farm	1127	1827
Carnewas for Bedruthan Steps	1133	1833
Trenance	1135	1835
Mawgan Porth Betty's Shop	0940 1040 1140	1840
Travarran Travellers Rest	0943 1043 1143	1843
Tregurrian Post Box	0946 1046 1146	1846
Watergate Bay	0948 1048 1148	1848
Porth car park	0954 1054 1154	1854
Porth Four Turns	0958 1058 1158	1858
Newquay rail station	1003 1103 1203	1903
Newquay bus station	1010 1110 1210	1910

then hourly until

Atlantic COASTER

a spectacular open top bus ride along this glorious coast

SUMMER 2023



PADSTOW
PORTHCOTHAN
BEDRUTHAN STEPS
MAWGAN PORTH
WATERGATE BAY
NEWQUAY



part of the **Transport for Cornwall**
Karyans rag Kernow network

What a great way to enjoy the spectacular scenery of Cornwall's Atlantic coast, where craggy headlands shelter some of the finest beaches in England.

Take this scenic open-top bus ride to discover panoramic views over land and out to sea that will take your breath away wherever you look.

Hop on and off where you like to discover pretty villages, cliffs and secret coves. There are designated bus stops along the way, but buses will try to stop wherever it's safe - just raise your arm in good time so the driver sees you.

There are also great walks to enjoy and by taking the bus you don't have to retrace your steps - just hop on another bus further along.

South West Coast Path

If you love getting fresh sea air in your lungs and breathtaking views wherever you look, you'll love walking any bit of this long-distance footpath round the coast of this part of Cornwall.

It's clearly marked and the beauty of taking the Atlantic Coaster is that you don't have to retrace your steps - just the catch the bus further along.

What are you waiting for; best foot forward!



Trevose Head

The headland is rich in birdlife and wild flowers. Enjoy a wonderful walk past Trevose Head Lighthouse and take in the spectacular views across the Cornish coast, towards The Bull and Quies rocks, and out into the Atlantic.

Start at Harlyn and finish at Porthcothan or vice versa.

Morgan Porth

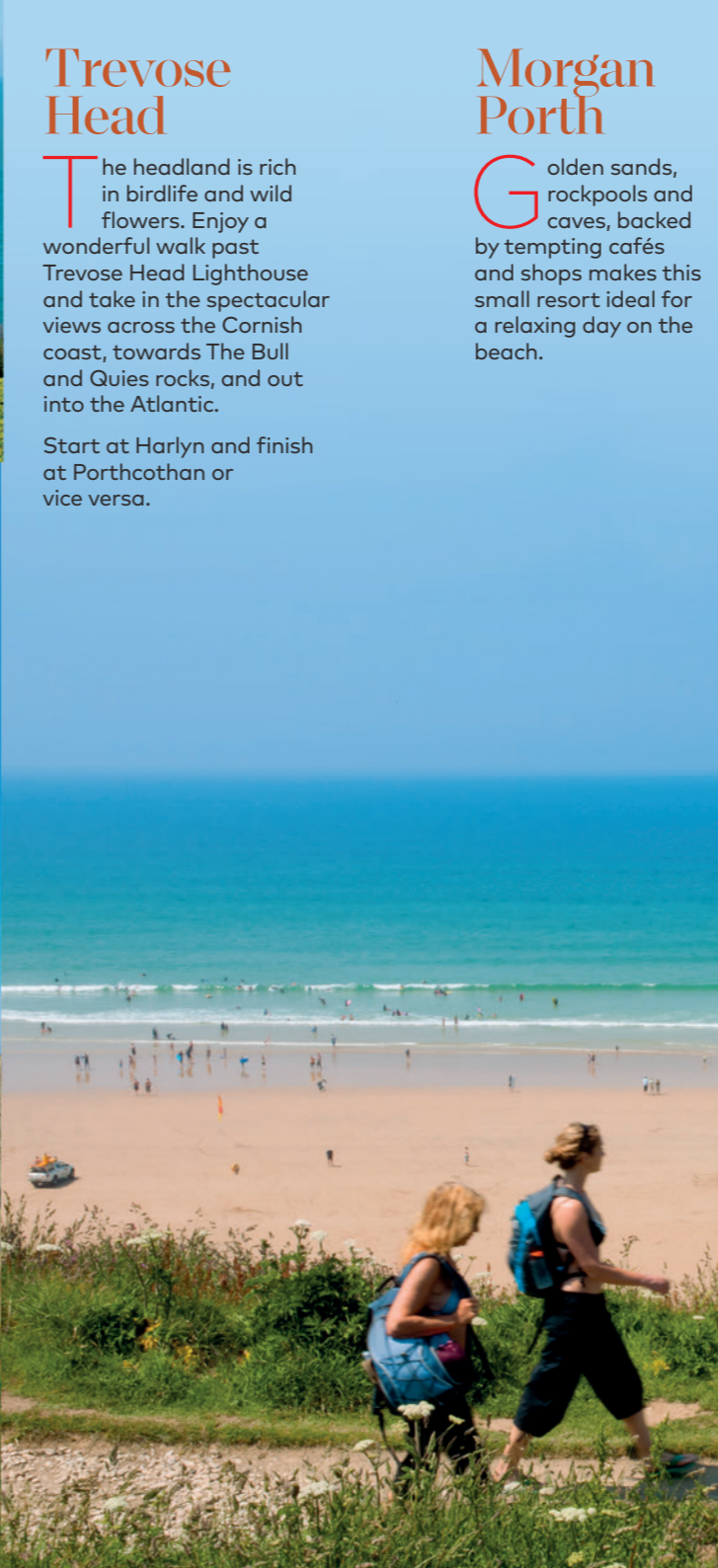
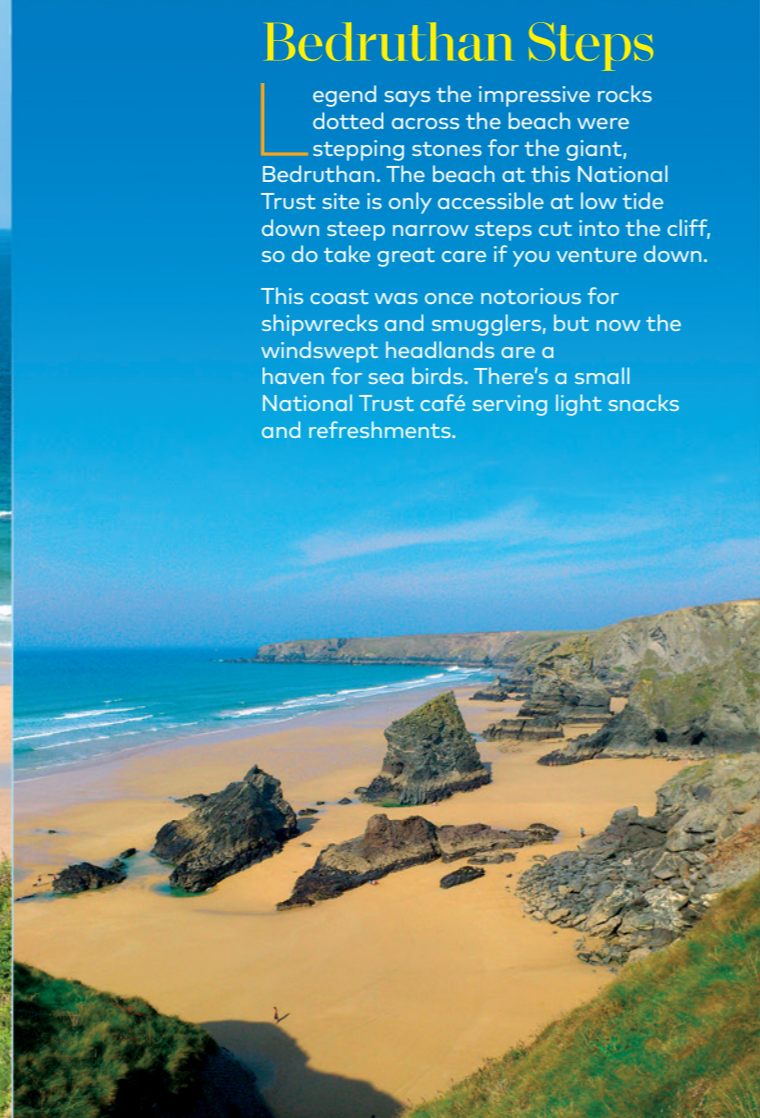
Golden sands, rockpools and caves, backed by tempting cafés and shops makes this small resort ideal for a relaxing day on the beach.



Bedruthan Steps

Legend says the impressive rocks dotted across the beach were stepping stones for the giant, Bedruthan. The beach at this National Trust site is only accessible at low tide, so do take great care if you venture down.

This coast was once notorious for shipwrecks and smugglers, but now the windswept headlands are a haven for sea birds. There's a small National Trust café serving light snacks and refreshments.



Watergate Bay

Two miles of golden sand at low tide and enormous waves off the Atlantic have made this bay famous for surfing and kite-surfing.

The beach is a European Designated beach with the highest standard for UK bathing water.



Porthcothan

Discover a lovely sandy beach backed by lush grassy dunes.

At low tide it opens out, connecting with small coves to the north and south. At high tide the beach is sheltered from swell and winds due to the cliffs.

There are shops and toilets close by.

