



Fast trains can get you into Reading Station from all over the West Country and South Wales, then it's just a short coach connection direct to Heathrow Airport.

RailAir really is the best way to the airport. The coaches are smart, stylish and extremely comfortable. Sit back and relax into plush armchair seats and take advantage of the free Wi-Fi and at-seat USB charging. Some seats are set around tables, ideal for up to four travelling together.

There's plenty of room for all your luggage in the cavernous hold and there are additional racks inside above your seat. The driver can help you with any awkward items.



information
railair.com
0345 646 0707
@railair

railair

& you're there



quick,
comfortable
coach link between
Reading Station &
Heathrow
Airport



DAILY
EARLY TO LATE
UP TO EVERY 30 MINS

from September 2022



RailAir coaches drop you off right outside Terminals 2, 3 and 5.

Here's how to find RailAir coaches for the journey to Reading Station.

from Terminals 2 & 3

Follow signs to Central Bus & Coach Station.

from Terminal 5

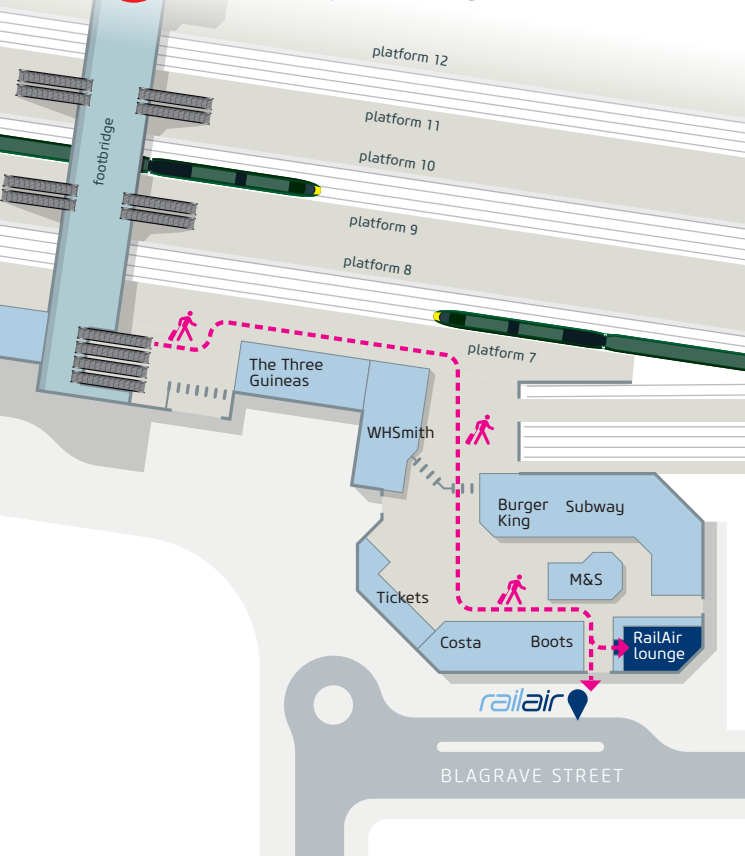
Follow the signs to local buses - go to stand 9.

using Terminal 4?

Use train or Underground to or from Central Terminal Area - it's free with an inter-terminal transfer ticket from a ticket vending machine.



Where to find the RailAir lounge and coach stop at Reading Station.



Reading to Heathrow

RA1

Reading railway station	0246	0355	0500	0530	0600	0630	0700	0730	then every 30 mins	00 30	until	1830	1900	1930	2000	2100	2200	2300
Reading Cemetery Junction	0250	0359	0504	0534	0604	0635	0705	0735		05 35		1835	1905	1934	2004	2104	2204	2304
Bray Wick Cemetery	0319	0419	0524	0554	0624	0657	0727	0757		27 57		1857	1927	1954	2024	2124	2224	2324
Heathrow Terminal 5	0341	0441	0546	0616	0646	0721	0751	0821	51 21	1921	1949	2016	2046	2146	2246	2346		
Compass Centre Newbury Rd	0347	0447	0552	0622	0652	0727	0757	0827	57 27	1927	1955	2022	2052	2152	2252	2352		
Heathrow Terminal 2	0354	0454	0559	0629	0659	0734	0804	0834	04 34	1934	2002	2029	2059	2159	2259	2359		
Heathrow Terminal 3	0359	0459	0604	0634	0704	0739	0809	0839	09 39	1939	2007	2034	2104	2204	2304	0004		

Heathrow to Reading

RA1

Heathrow Central Bus Station	0413	0513	0618	0648	0718	0755	then every 30 mins	25 55	until	1755	1825	1855	1925	1955	2025	2118	2148	2218	2318	0018
Compass Centre stop BW	0419	0519	0624	0654	0724	0801		31 01		1801	1831	1901	1931	2001	2031	2124	2154	2224	2324	0024
Heathrow Terminal 5	0430	0530	0636	0708	0738	0815		45 15		1815	1845	1915	1942	2012	2042	2135	2205	2235	2335	0035
Bray Wick Cemetery	0452	0552	0700	0732	0802	0839	09 29	1839	1909	1937	2004	2034	2104	2157	2227	2257	2357	0057		
Reading Cemetery Junction	0508	0608	0718	0750	0820	0857	27 57	1857	1927	1953	2020	2050	2120	2213	2243	2313	0013	0113		
Reading railway station	0513	0613	0725	0757	0827	0904	34 04	1904	1932	1958	2025	2055	2125	2218	2248	2318	0018	0118		

- this bus also stops at Twyford Waitrose at 0301
- Maidenhead railway station at 0317

check the website for Christmas & Easter holiday times

FARES

We have a range of suitable fares, including discounts for under-16s and groups of up to 4 people travelling together.

The best prices are always online and you can book up to 5pm on the day before you want to travel - just bring the printout or show on your phone when you board the coach.

railair.com

We also have walk-up fares available from the Railair lounge at Reading Station or from the driver when you board.

Pay cash or contactless.

All prices online.

